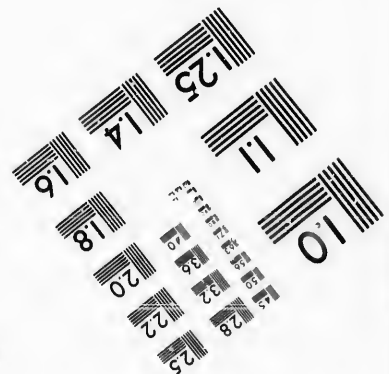
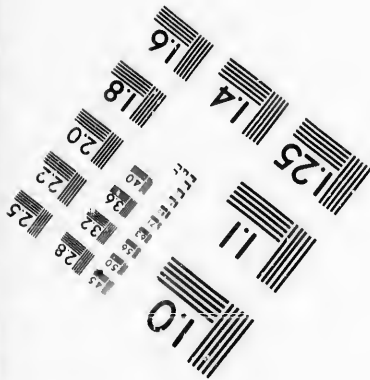
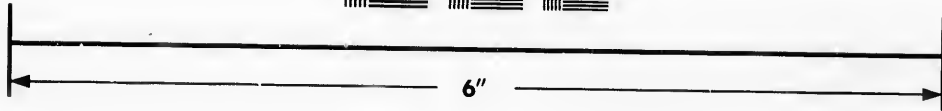
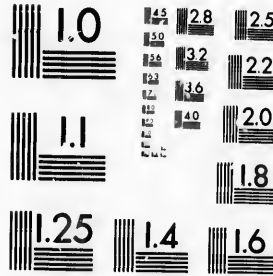
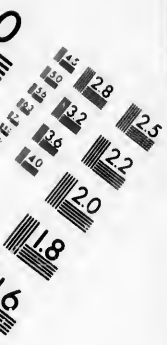


**IMAGE EVALUATION  
TEST TARGET (MT-3)**



**Photographic  
Sciences  
Corporation**

23 WEST MAIN STREET  
WEBSTER, N.Y. 14580  
(716) 872-4503



**CIHM/ICMH  
Microfiche  
Series.**

**CIHM/ICMH  
Collection de  
microfiches.**



Canadian Institute for Historical Microreproductions / Institut canadien de microreproductions historiques



**© 1986**

Technical and Bibliographic Notes/Notes techniques et bibliographiques

The Institute has attempted to obtain the best original copy available for filming. Features of this copy which may be bibliographically unique, which may alter any of the images in the reproduction, or which may significantly change the usual method of filming, are checked below.

L'Institut a microfilmé le meilleur exemplaire qu'il lui a été possible de se procurer. Les détails de cet exemplaire qui sont peut-être uniques du point de vue bibliographique, qui peuvent modifier une image reproduite, ou qui peuvent exiger une modification dans la méthode normale de filmage sont indiqués ci-dessous.

- |  |  |
|--|--|
| <input type="checkbox"/> Coloured covers/<br>Couverture de couleur   | <input type="checkbox"/> Coloured pages/<br>Pages de couleur   |
| <input type="checkbox"/> Covers damaged/<br>Couverture endommagée  | <input checked="" type="checkbox"/> Pages damaged/<br>Pages endommagées  |
| <input type="checkbox"/> Covers restored and/or laminated/<br>Couverture restaurée et/ou pelliculée  | <input type="checkbox"/> Pages restored and/or laminated/<br>Pages restaurées et/ou pelliculées  |
| <input type="checkbox"/> Cover title missing.<br>Le titre de couverture a manqué   | <input checked="" type="checkbox"/> Pages discoloured, stained or foxed/<br>Pages décolorées, tachetées ou piquées   |
| <input type="checkbox"/> Coloured maps/<br>Cartes géographiques en couleur   | <input type="checkbox"/> Pages detached/<br>Pages détachées  |
| <input checked="" type="checkbox"/> Coloured ink (i.e. other than blue or black)/<br>Encre de couleur (i.e. autre que bleue ou noire)  | <input checked="" type="checkbox"/> Showthrough/<br>Transparence   |
| <input checked="" type="checkbox"/> Coloured plates and/or illustrations/<br>Planches et/ou illustrations en couleur   | <input type="checkbox"/> Quality of print varies/<br>Qualité inégale de l'impression   |
| <input type="checkbox"/> Bound with other material/<br>Relié avec d'autres documents   | <input type="checkbox"/> Includes supplementary material/<br>Comprend du matériel supplémentaire   |
| <input type="checkbox"/> Tight binding may cause shadows or distortion<br>along interior margin/<br>La reliure serrée peut causer de l'ombre ou de la<br>distorsion le long de la marge intérieure   | <input type="checkbox"/> Only edition available/<br>Seule édition disponible   |
| <input type="checkbox"/> Blank leaves added during restoration may<br>appear within the text. Whenever possible, these<br>have been omitted from filming/<br>Il se peut que certaines pages blanches ajoutées<br>lors d'une restauration apparaissent dans le texte,<br>mais, lorsque cela était possible, ces pages n'ont<br>pas été filmées. | <input type="checkbox"/> Pages wholly or partially obscured by errata<br>slips, tissues, etc., have been refilmed to<br>ensure the best possible image/<br>Les pages totalement ou partiellement<br>obscurcies par un feuillet d'errata, une pelure,<br>etc., ont été filmées à nouveau de façon à<br>obtenir la meilleure image possible. |
| <input checked="" type="checkbox"/> Additional comments:/ [Printed ephemera] 7, [1] p.<br>Commentaires supplémentaires:  |  |

This item is filmed at the reduction ratio checked below/  
Ce document est filmé au taux de réduction indiqué ci-dessous.

10X	12X	14X	16X	18X	20X	22X	24X	26X	28X	30X	32X
				✓							

The copy filmed here has been reproduced thanks to the generosity of:

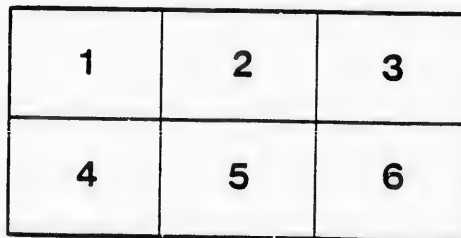
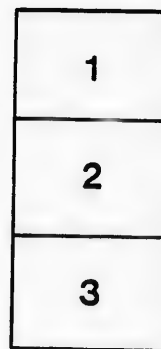
Department of Rare Books  
and Special Collections,  
McGill University, Montreal.

The images appearing here are the best quality possible considering the condition and legibility of the original copy and in keeping with the filming contract specifications.

Original copies in printed paper covers are filmed beginning with the front cover and ending on the last page with a printed or illustrated impression, or the back cover when appropriate. All other original copies are filmed beginning on the first page with a printed or illustrated impression, and ending on the last page with a printed or illustrated impression.

The last recorded frame on each microfiche shall contain the symbol  $\rightarrow$  (meaning "CONTINUED"), or the symbol  $\nabla$  (meaning "END"), whichever applies.

Maps, plates, charts, etc., may be filmed at different reduction ratios. Those too large to be entirely included in one exposure are filmed beginning in the upper left hand corner, left to right and top to bottom, as many frames as required. The following diagrams illustrate the method:



L'exemplaire filmé fut reproduit grâce à la générosité de:

Department of Rare Books  
and Special Collections,  
McGill University, Montreal.

Les images suivantes ont été reproduites avec le plus grand soin, compte tenu de la condition et de la netteté de l'exemplaire filmé, et en conformité avec les conditions du contrat de filmage.

Les exemplaires originaux dont la couverture en papier est imprimée sont filmés en commençant par le premier plat et en terminant soit par la dernière page qui comporte une empreinte d'impression ou d'illustration, soit par le second plat, selon le cas. Tous les autres exemplaires originaux sont filmés en commençant par la première page qui comporte une empreinte d'impression ou d'illustration et en terminant par la dernière page qui comporte une telle empreinte.

Un des symboles suivants apparaîtra sur la dernière image de chaque microfiche, selon le cas: le symbole  $\rightarrow$  signifie "A SUIVRE", le symbole  $\nabla$  signifie "FIN".

Les cartes, planches, tableaux, etc., peuvent être filmés à des taux de réduction différents. Lorsque le document est trop grand pour être reproduit en un seul cliché, il est filmé à partir de l'angle supérieur gauche, de gauche à droite, et de haut en bas, en prenant le nombre d'images nécessaire. Les diagrammes suivants illustrent la méthode.



CANADIAN


HUNTING


TROPHIES



MONTREAL, February, 1893.

I AM instructed by Messrs. JOHN MARTIN  
& Co., Fur Merchants, of this city, to  
sell by Public Auction, on account of whom  
it may concern, a collection of **Canadian  
Hunting Trophies**, comprising some of  
the choicest specimens ever offered in this  
market.

 Each lot to be sold absolutely with-  
out reserve.

 Every article guaranteed as de-  
scribed and all warranted in prime condition.

---

SALE (SATURDAY AFTERNOON,) FEB. 11th.  
AT 2.30 O'CLOCK.

1821 & 1823 Notre Dame Street.

*M. HICKS & CO., Auctioneers.*

# CATALOGUE.

## BUFFALO.

(*Bos Americanus.*)

LOT No. 1. Stuffed Head, mounted on oak shield. Claimed to be the last Buffalo shot in Manitoba. A superb specimen, absolutely perfect in every detail, and probably without its equal in the world.

LOT No. 2. Stuffed Head, mounted on walnut shield. A thoroughly typical specimen of this well known animal and would rank first class in any collection.

LOT No. 3. Skull, sun-bleached, mounted on heavy walnut shield. Selected, privately, as the finest specimen obtainable in the North West.

LOT No. 4. Skull, sun-bleached, (or natural) unmounted.

To secure a perfect specimen becomes a more difficult task each year, as already, every fragment of bone within reach of railways, has disappeared.

LOT No. 5. Buffalo Horns, polished and mounted.

LOT No. 6. do. do. do.

LOT No. 7. do. polished, unmounted.

These are at once useful and ornamental—they make very convenient hat-racks.

**MUSK OX.**

(*Ovibos Moschatus.*)

Lot No. **8.** Musk Ox Bull Head, mounted on walnut.

Lot No. **9.** Musk Ox Cow Head, mounted on walnut.

The rarest of all living mammals is unquestionably the Musk Ox, and this is the first time the Cow's head has ever been exhibited in Canada; the pair may be considered a unique possession.

**WAPITI or CANADIAN ELK.**

(*Cervus Canadensis.*)

Lot No. **10.** Wapiti Head, mounted on walnut.

Lot No. **11.** Wapiti Head with Antlers, unmounted.

Lot No. **12.** Wapiti Antlers, mounted on walnut.

The Elk or Wapiti is the grandest of all the deers, in its possession of the royal antlers, and rarely are more perfect examples seen than lots 10 and 11.



## MOOSE.

(*Alce Americanus.*)

The Moose is generally considered the noblest game in our Canadian forests, and the monster size and bold spirit of the bull moose as he "charges" the hunter, has inspired many romantic pages.

LOT No. 13. Moose Head, mounted on walnut.

LOT No. 14. do. and Antlers, unmounted.

LOT No. 15. Moose Antlers, mounted on shield.

## CARIBOU.

(*Rangifer Caribou*)

The wide distribution and economy of the Woodland Caribou makes the animal very interesting, while the graceful antlers have long been favorite decorations.

LOT No. 16. Caribou Head, mounted on walnut.

LOT No. 17. do. do.

LOT No. 18. do. do.

LOT No. 19. Caribou Antlers, mounted on shield.

LOT No. 20. do. do.

LOT No. 21. Caribou Antlers, unmounted.

LOT No. 22. do. do.

## BLACK-TAILED DEER.

(*Cervus Columbianus.*)

The antlers of this deer are the perfect ideal of decorative beauty. Not so large as the Wapiti, not so slight as the Red Deer, but with the characters of each blended in pleasing symmetry. Good specimens are, however, always scarce and in demand.

LOT No. **23.** Black-Tailed Deer Head and Antlers, unmounted.

LOT No. **24.** Black-Tailed Deer Skull, mounted on walnut.

LOT No. **25.** Black-Tailed Deer Skull, unmounted.

## VIRGINIAN DEER.

(*Cervus Virginianus.*)

This may be called the common deer of the east, though fine specimens are not frequently met with, while only the best may be considered worth preserving. It is always interesting for comparative study.

LOT No. **26.** Virginian Deer Head, mounted on walnut, (an extra fine specimen, the snags on the first or brow tynes are very unusual.

LOT No. **27.** Virginian Deer Head,—mounted, (a good adult specimen).

### ROCKY MOUNTAIN SHEEP.

(*Ovis Montana.*)

The world-famous Bighorn is now quite a favorite among collectors, who enviously search for the special points of merit. As the name implies, the chief characteristic is bigness, though color and general style are always considered. Fifteen inches circumference at base is good, anything above that is extra large.

LOT No. **28.** Rocky Mountain Sheep Head, mounted

LOT No. **29.** do. do. Head & Horns,  
unmounted, (extra large).

LOT No. **30.** Rocky Mountain Sheep Skull, mounted

LOT No. **31.** do. do. unmounted

### ROCKY MOUNTAIN GOAT.

(*Aploccerus Montanus.*)

No collection would be complete without this odd-looking member; and though without much beauty, the trophy will often recall some interesting experiences recorded by the intrepid hunters of the West.

LOT No. **32.** Rocky Mountain Goat Head, mounted.

LOT No. **33.** do. do. unmounted.

LOT No. **34.** Rocky Mountain Goat Skull, mounted.

### PRONG-HORN ANTELOPE.

(*Antilocapra Americana.*)

This pretty little animal is not much known to the eastern world, though few hunting trophies equal it for beauty and interest. The growth of the horn is quite unique and deserves our better acquaintance.

LOT No. **35.** Antelope Head, mounted on walnut.

CANADIAN HUNTING TROPHIES  
[Arctic] Catalogue

Canadian  
1880-1881



